

領眾行車紀錄器 安裝說明

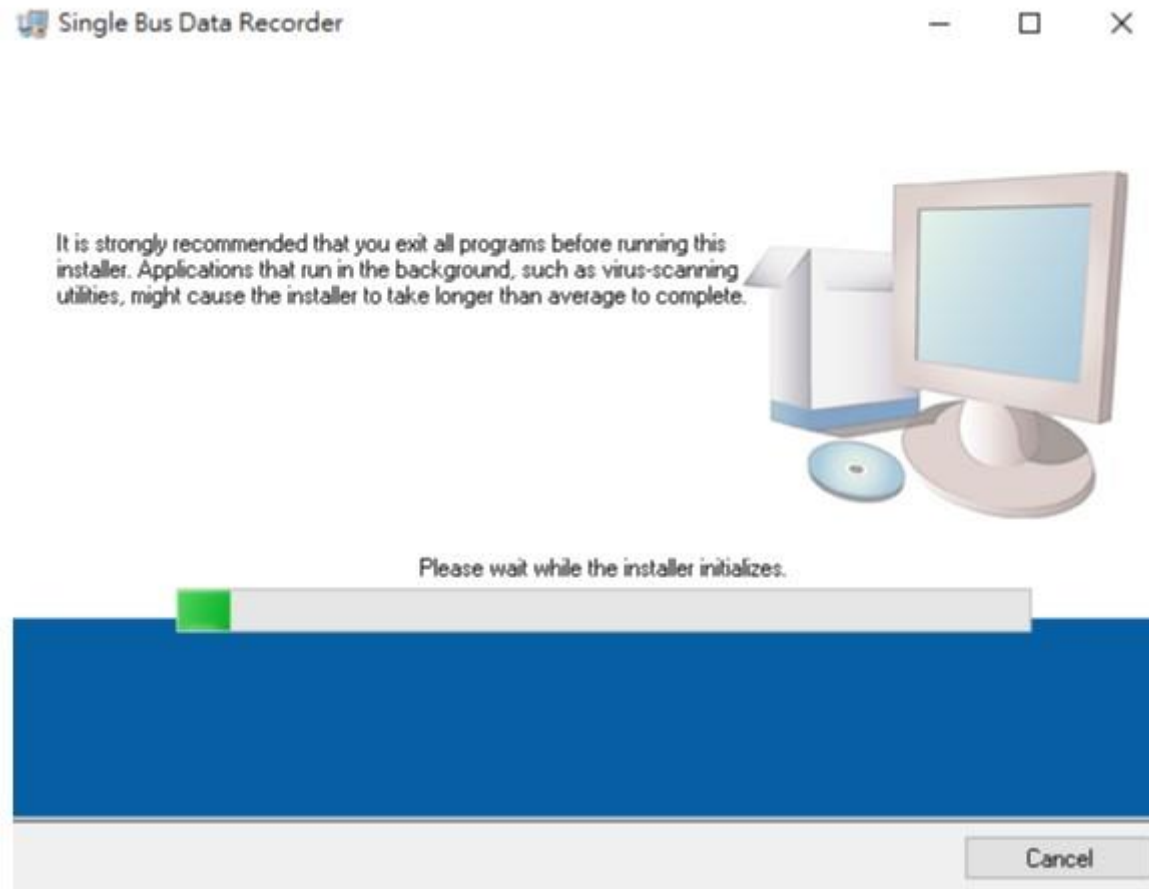
步驟 1

開啟安裝程式

名稱	修改日期	類型	大小
bin	2018/3/6 上午 11...	檔案資料夾	
license	2018/3/6 上午 11...	檔案資料夾	
supportfiles	2018/3/6 上午 11...	檔案資料夾	
nidist.id	2017/12/14 下午 ...	ID 檔案	1 KB
setup.exe	2017/5/9 上午 10...	應用程式	1,393 KB
setup.ini	2017/12/14 下午 ...	組態設定	28 KB

步驟 2

等待安裝輔助跑完



步驟 3

設定安裝路徑

Single Bus Data Recorder

Destination Directory
Select the installation directories.

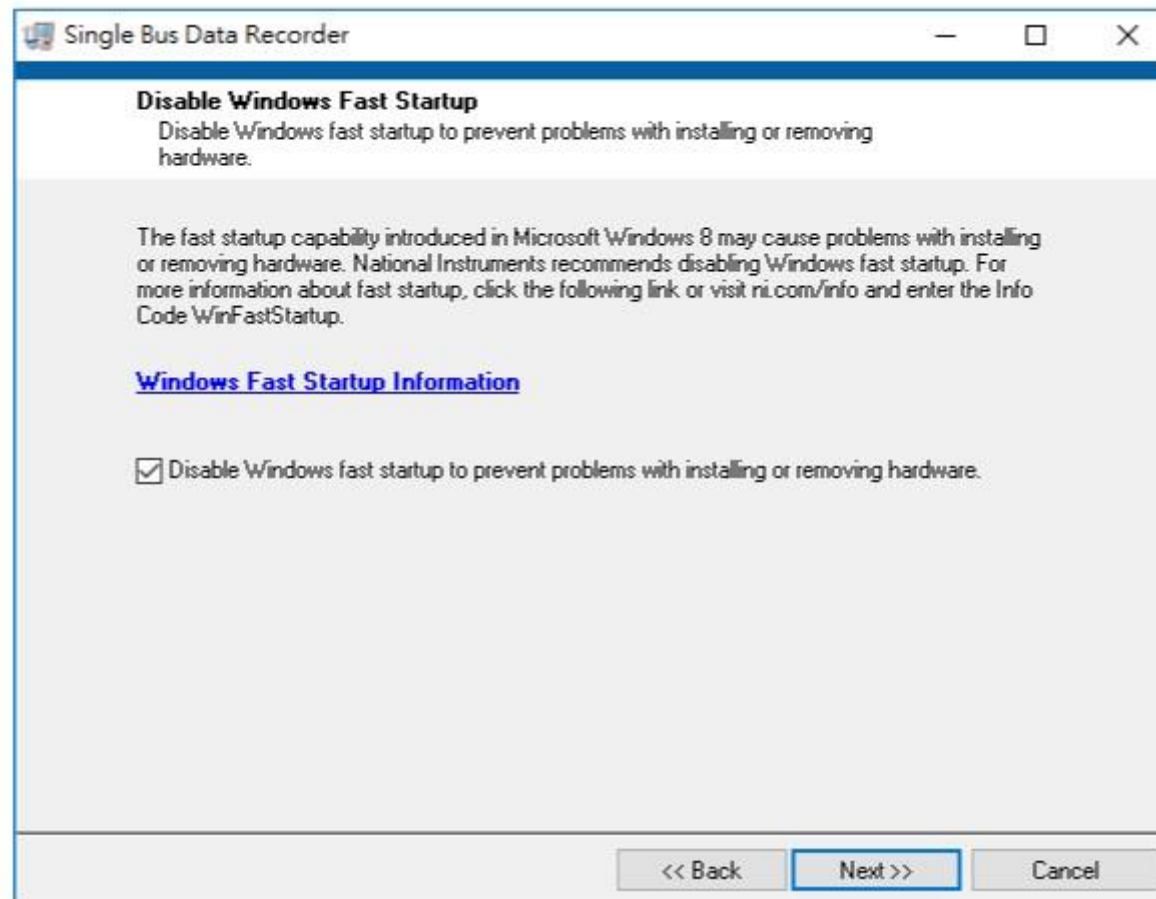
All software will be installed in the following locations. To install software into a different location, click the Browse button and select another directory.

Directory for Single Bus Data Recorder

Directory for National Instruments products

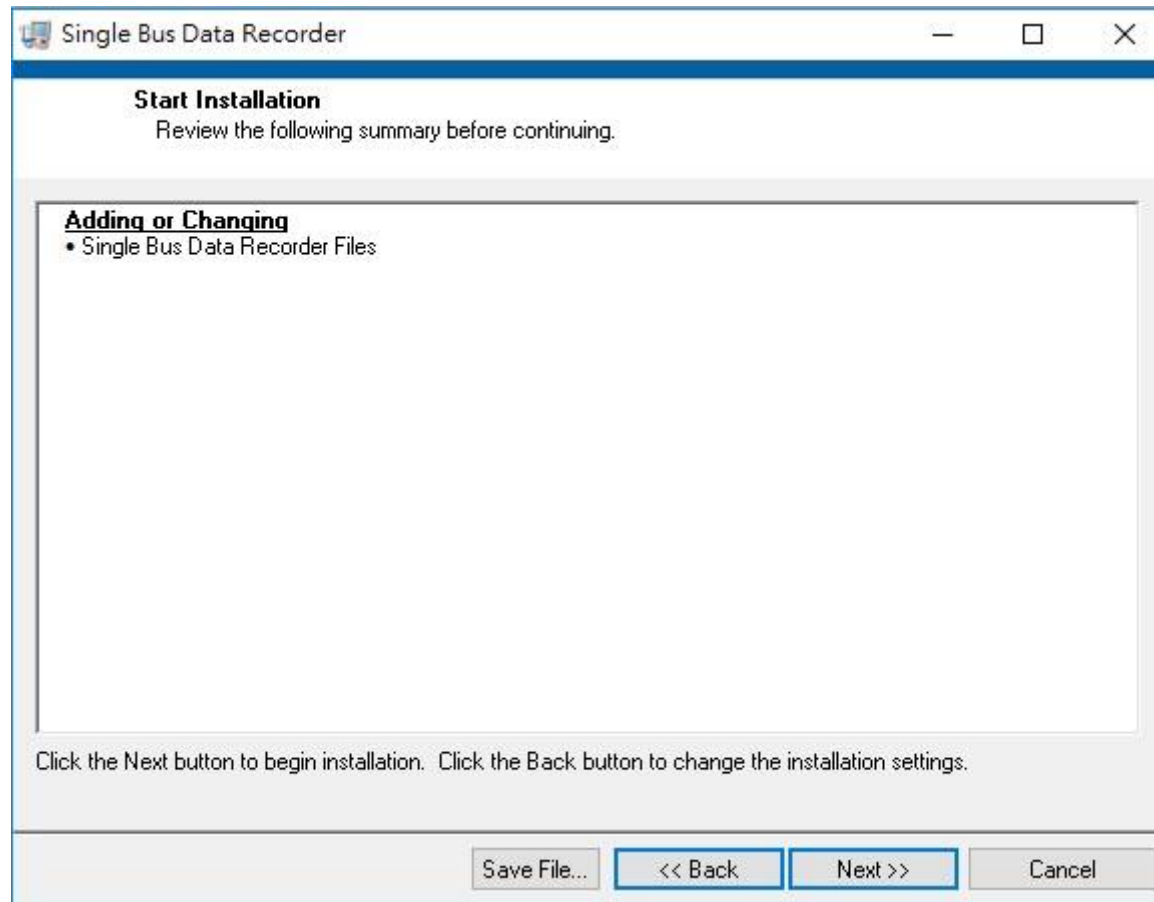
步驟 4

點選 NEXT



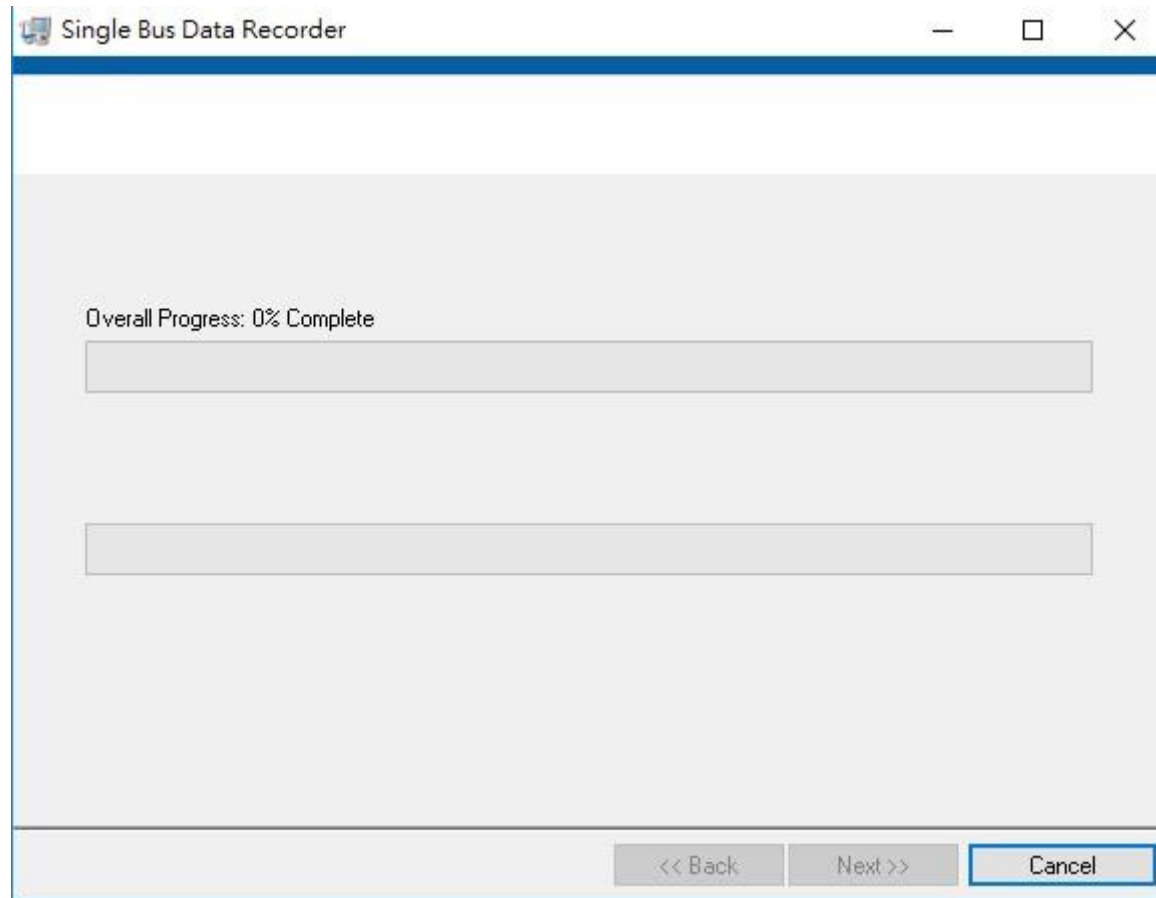
步驟 5

點選 NEXT



步驟 6

等待安裝完畢



步驟 7

按下 **Finsh** 完成安裝程序

